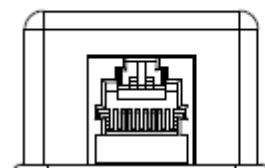
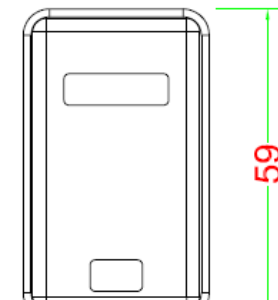
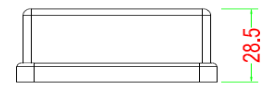


Surface Mount Box



1 & 2 & 4 & 6 Port Surface



(mm)

DESCRIPTION

Applications

- Snap in module for different Configuration of jack and connectors

Features

- 1 & 2 & 4 & 6 studs for cable tie fastening

Specifications

Item	Value
Body Materials	Fireproof ABS UL-94V0
Offer Options	1 & 2 & 4 & 6 Port snap-in modules
Temperature Range	-40°C ~ +70°C

ORDER INFORMATION

W-MB-①-②-N-③-④-⑤

①Application Type	②Material	③Shutter	④Available Port	⑤color
I : Industry	A:ABS	U:No shutter	01: 1 Port	WH:WHITE
C: common	P:PC	S:with shutter	02: 2 Port	
M:Media			04: 4 Port	
			06: 6 Port	