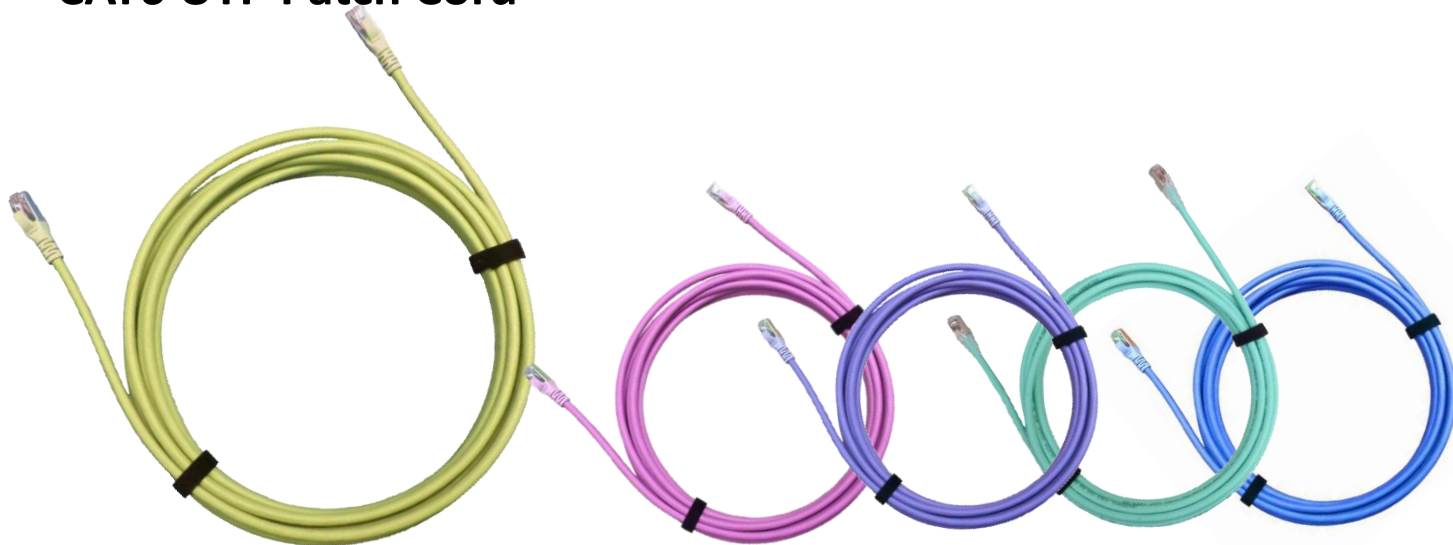


CAT6 UTP Patch Cord



DESCRIPTION

Applications

- TIA-568 CAT5E Performance standard
- Telecom Network
- Equipment connect
- 400 MHz Broadband
- Local Area Network

Specifications

Features

- High performance Network patch cord
- Different types of cable, boots and plug are available to assemble
- RJ-45 Plugs with 50 micro inch gold plated contacts

| Item | Value |
|------------------------|-----------------|
| Outer jacket material | FRPVC / LSOH |
| Propagation delay skew | 40ns/100M |
| Durability | ≥ 750 Matings |
| Mutual Capacitance MAX | nf/1000ft 17.1 |
| Impedance | 100 +/- 15 ohms |
| Operating temperature | -20°C to 75°C |

DESCRIPTION

W-PC- - - - - - - - -
 ① ② ③ ④ ⑤ ⑥ ⑦ ⑧

| ① Assembly Type | ② Isolation Type | ③ Cable Diameter | ④ Type | ⑤ Cable type | ⑥ Boot type | | ⑦ Pair | ⑧ Connector Type |
|-----------------|------------------|------------------|-----------|--------------|-------------|-------|----------|------------------|
| C3=CAT3 | U=UTP | 3= 23AWG | M=Molding | 1=Solid | M=CM | R=CMR | 1=1 Pair | A=RJ45-RJ45 |
| C5=CAT5 | F =FTP | 4:=24AWG | B=Boot | 7=Stranded | L=LSZH | X=CMX | 2=2 Pair | B=RJ45-110 |
| 5E=CAT5 | | 6=26AWG | N=Non | | P=CMP | V=PVC | 4=4 Pair | C=110-110 |
| C6=CAT6 | | | | | E=PE | | | D=RJ45-RJ11 |
| 6A=CAT6A | | | | | | | | D=RJ45-RJ11 |
| | | | | | | | | E=RJ11-110 |
| | | | | | | | | F=RJ11-RJ11 |