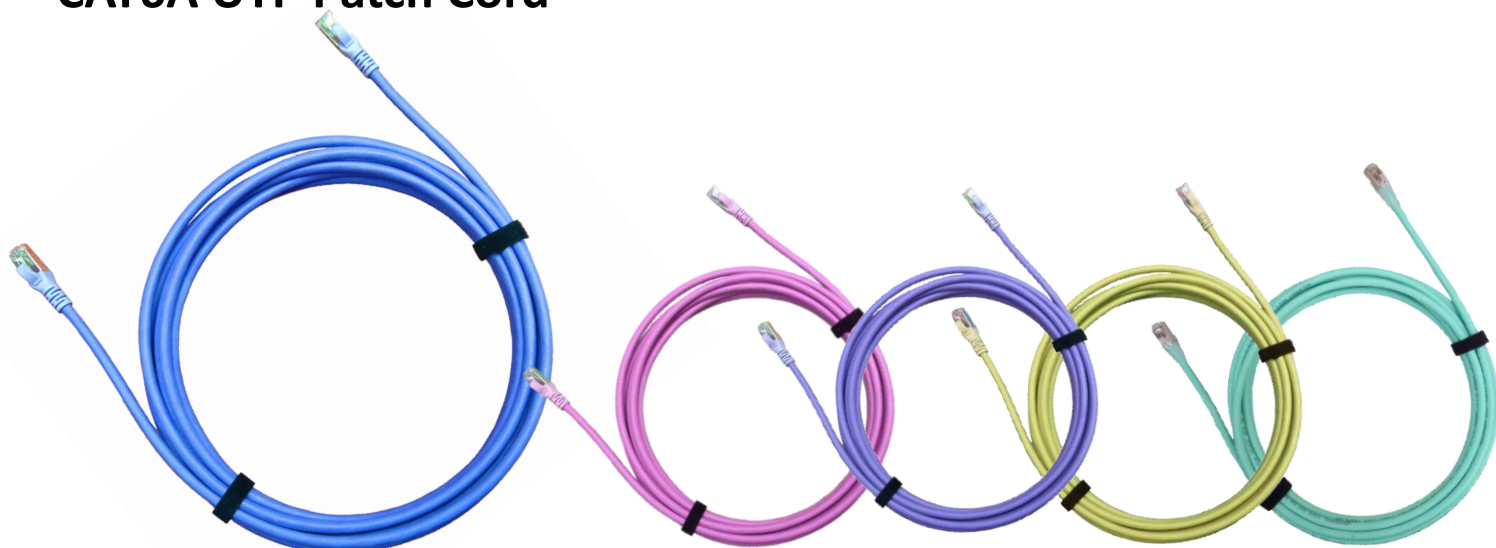


CAT6A UTP Patch Cord



DESCRIPTION

Applications

- TIA-568 CAT5E Performance standard
- Telecom Network
- Equipment connect
- 750 MHz Broadband
- Local Area Network

Specifications

Features

- High performance Network patch cord
- Different types of cable, boots and plug are available to assemble
- RJ-45 Plugs with 50 micro inch gold plated contacts

Item	Value
Outer jacket material	FRPVC / LSOH
Propagation delay skew	40ns/100M
Durability	≥ 750 Matings
Mutual Capacitance MAX	nf/1000ft 17.1
Impedance	100 +/- 15 ohms
Operating temperature	-20°C to 75°C

DESCRIPTION

W-PC- - - - - - - - -
 ① ② ③ ④ ⑤ ⑥ ⑦ ⑧

① Assembly Type	② Isolation Type	③ Cable Diameter	④ Type	⑤ Cable type	⑥ Boot type		⑦ Pair	⑧ Connector Type
C3=CAT3	U=UTP	3= 23AWG	M=Molding	1=Solid	M=CM	R=CMR	1=1 Pair	A=RJ45-RJ45
C5=CAT5	F =FTP	4:=24AWG	B=Boot	7=Stranded	L=LSZH	X=CMX	2=2 Pair	B=RJ45-110
5E=CAT5		6=26AWG	N=Non		P=CMP	V=PVC	4=4 Pair	C=110-110
C6=CAT6					E=PE			D=RJ45-RJ11
6A=CAT6A								D=RJ45-RJ11
								E=RJ11-110
								F=RJ11-RJ11